

60c Beginner

\$1.60 Snowboarder

\$1.65 Skier



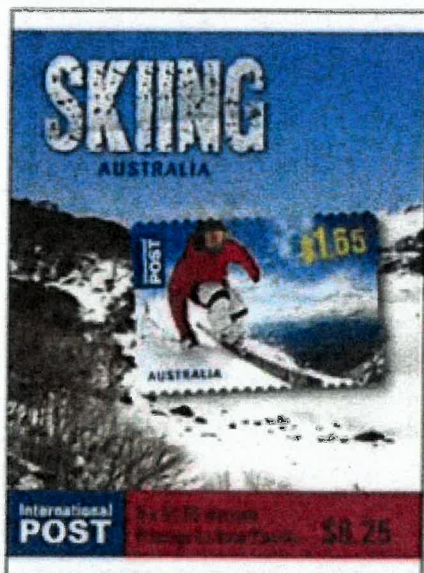
First Day of Issue
19 July 2011
Jindabyne
NSW 2627

Snow skiing had its genesis in Australia 150 years ago, at the Snowy Mountains settlement of Kiandra, New South Wales. A small group of Austrians and a Norwegian, goldminers at the settlement, were behind the activity. The club that developed was called the Kiandra Snow Shoe Club, later renamed the Kiandra Pioneer Ski Club. This is thought to be the first and longest-surviving ski club in the world, established the same year as the first club in Norway, although the claim is not universally supported. Australia's first snowfield T-bar was also erected at Kiandra, many years later in 1957.

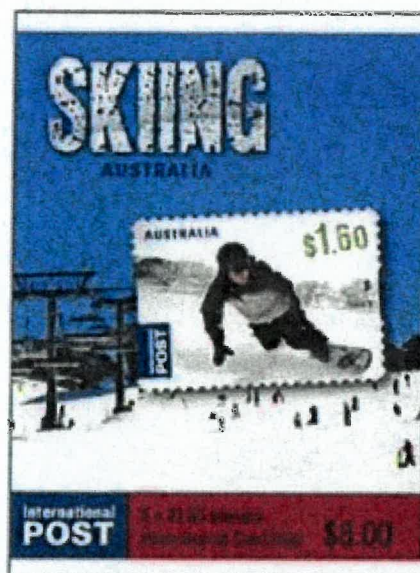
ISSUE HIGHLIGHTS

The place for this FDI postmark is Jindabyne in New South Wales. The township is one of the highest settlements of its size in Australia - 918 metres above sea level. The town is also in close proximity to the Snowy Mountains skifields.

Today, skiing and snowboarding are undertaken in three Australian states: New South Wales, Victoria and Tasmania. While these are among the most expensive leisure activities to practise in Australia, recent statistics from the Australian Ski Areas Association estimate that just over two million lift passes were sold across the resorts in 2009. Australia's 14 alpine resorts are of varying size and sophistication, the most popular being Perisher, Thredbo, Mt Buller, Hotham and Falls Creek.



1696252 Sheetlet s/a
five x \$1.65



1696250 Sheetlet s/a
five x \$1.60